

MC5

Remote Control of Cam Pac® Remote Camera Systems

Features

User Friendly Operation

- Provides complete control and monitoring of Cam Pac® remote camera systems
- Straight forward control buttons and meters are easy to understand and operate

Advanced Automatic Functions

- Simplify and enhance daily operations
- **Preset** allows up to 100 preset settings per remote camera system to be programmed into the MC5 master unit for instant recall
- **Camera Scene** allows up to 100 camera scenes per remote camera system to be programmed into the MC5 master unit for instant recall
- **Map** aligns the remote camera system with a position selected from an on-screen map
- **Go To** rotates the remote camera system to a heading selected from a compass rose
- **Step** jogs the remote camera system in fixed increments
- **Real Time Video** displays live video from the Cam Pac remote camera system

Administrator Module

- All operational parameters of the remote camera system are user defined through the Administrator
- Enables the user to custom tailor the MC5 equipment control panel as well as the system control unit



User Friendly Operation

The MC5 provides complete control and monitoring of the Cam Pac® remote camera system. It's user friendly control panel features straight forward control buttons and meters, providing intuitively easy operation and a short learning curve.

Advanced Automatic Functions

The MC5's advanced automatic functions simplify and enhance daily operations. The *Map*, *Go To* and *Step* functions speed the alignment of the remote camera system.

The *Preset* function allows up to 100 presets per remote camera system to be programmed into the MC5 master unit for instant recall. Each preset includes all of the remote camera system settings. The *Preset* function is ideal for storing the settings of frequently used locations as well as rapidly switching between back-to-back shots.

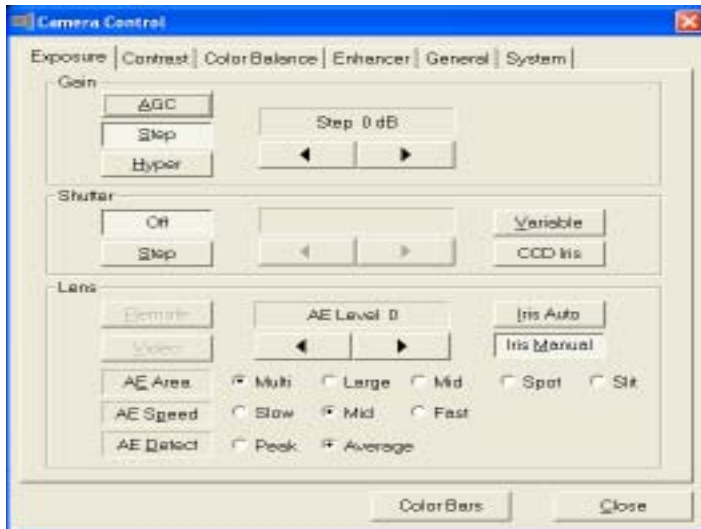
The *Camera Scene* function allows up to 100 camera scenes per remote camera system to be programmed into the MC5 master unit for instant recall. Each camera scene includes all of the camera settings.

Administrator Module

A highly versatile Administrator module is included, enabling the user to custom tailor the system to meet the operational requirements of each application. Through the Administrator, the user can define all the parameters of the system, including the graphic display and operation of the MC5 equipment control panel as well as the system control unit.

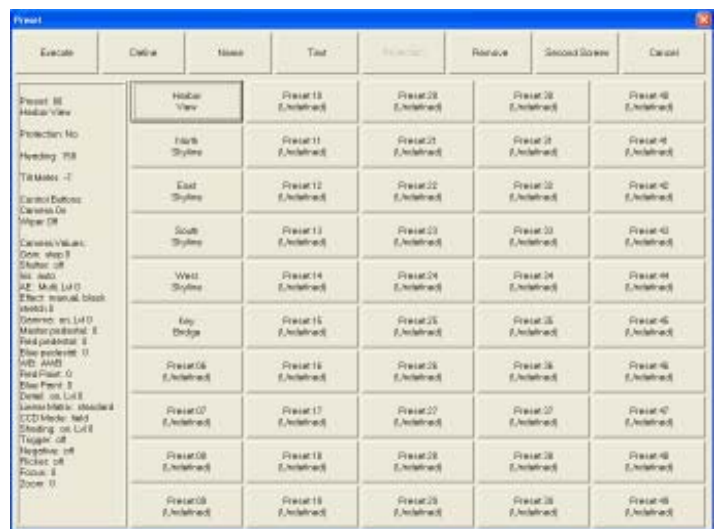


MC5 Remote Control of Cam Pac® Remote Camera Systems



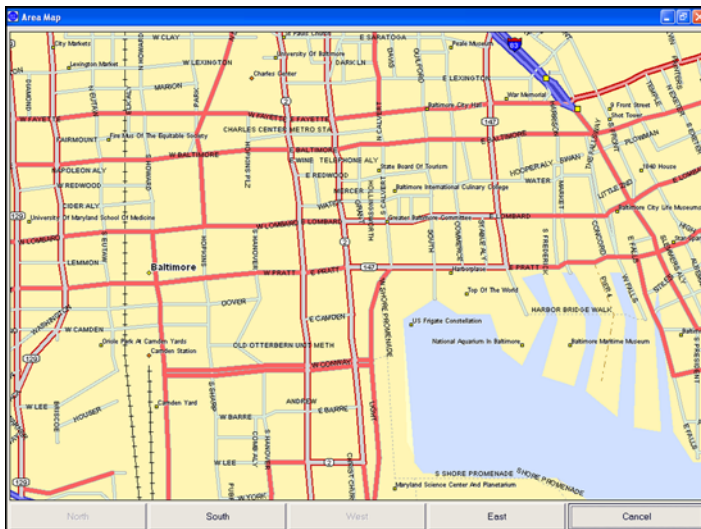
Complete Control of the Camera Functions

The MC5 provides complete control of the camera functions, enabling the operator to optimize the video performance.



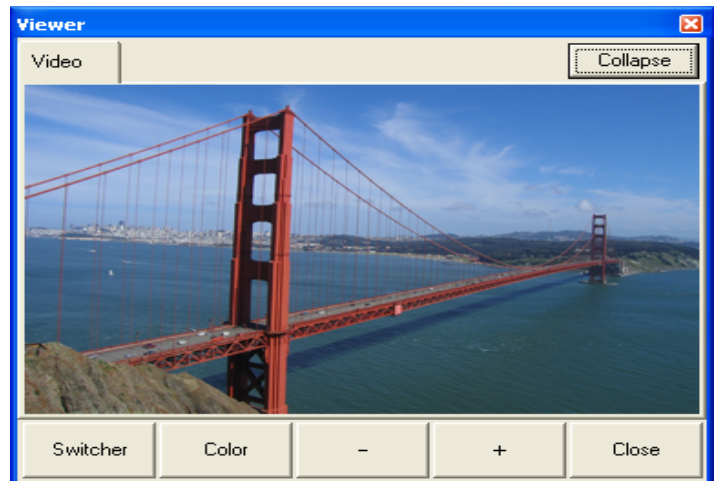
Preset Function

The Preset function allows up to 100 presets per remote camera system to be programmed into the MC5 master unit for instant recall. Each preset includes all of the remote camera system settings and can be given a name as well as additional descriptive text through an on-screen keyboard.



Map Function

The Map function allows the MC5 operator to select the desired location on an on-screen map to align the remote camera system. The positioner then automatically rotates to the proper heading. Each remote camera system can have up to ten user-defined maps.



Real Time Video

The MC5 master unit can display a live video signal from each of the remote sites. The associated video source for each Cam Pac® remote camera system's equipment control panel screen is automatically selected by a switcher co-located with the MC5 master unit, eliminating the need to manually switch video sources.