

# MC5

## Remote Control of Canon Remote Camera Systems

### Features

#### User Friendly Operation

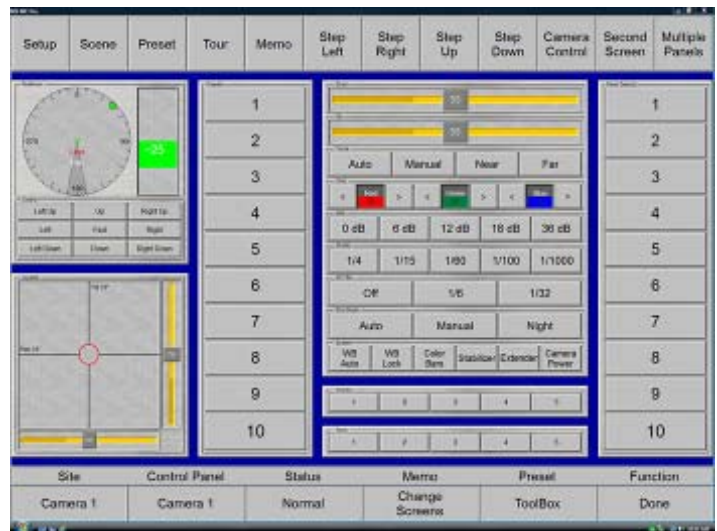
- Provides complete control and monitoring of Canon BU-45H/BU-46H and BU-50H/BU51H remote camera systems
- On-screen virtual joystick
- Optional desktop joystick

#### Advanced Automatic Functions

- Simplify and enhance operation
- **Preset** function saves the camera, lens and pan/tilt settings for instant recall
- **Tour** function executes a series of individual presets and includes preset-to-preset time intervals and dwell time per preset
- **Scene** function saves the camera settings for instant recall
- **Go To** rotates the remote camera system to a heading selected from a compass rose
- **Step** jogs the remote camera system in fixed increments

#### Administrator Module

- All operational parameters of the remote camera system are user defined through the Administrator
- Enables the user to custom tailor the MC5 to meet the operational requirements of each application



#### User Friendly Operation

The MC5 provides complete control and monitoring of the Canon BU-45H/BU46H and BU-50H/BU51H remote camera systems. Its user friendly control panel features straight forward control buttons and meters, providing intuitively easy operation and a short learning curve.

#### Advanced Automatic Functions

The MC5 includes several advanced automatic functions to enhance operation of the remote camera system.

The **Preset** function allows up to 32 presets per remote camera system to be programmed into the MC5 master unit for instant recall. Each preset includes all of the camera, lens and pan/tilt settings. The **Preset** function is ideal for storing the settings of frequently used shots as well as rapidly switching between back-to-back shots.

The **Tour** function is ideal for on-air camera operation. Up to 32 tours per remote camera system can be saved for instant recall. Each user-defined tour includes up to 32 individual presets with selectable preset-to-preset time intervals and selectable dwell timer per preset. The presets of each tour can be executed in reverse order and each tour can be executed in a scan mode.

The **Scene** function allows up to 32 scenes per remote camera system to be saved for instant recall. Each scene includes the camera settings only and does not change the lens or pan/tilt settings.



# MC5 Remote Control of Canon Remote Camera Systems

## Joystick Control

In addition to the control of the camera system via the on-screen virtual joystick, a desktop joystick is available for proportional trim control of the pan, tilt, zoom and focus. The desktop joystick also includes user-defined buttons for the control of other camera functions or the execution of presets.

## Administrator Module

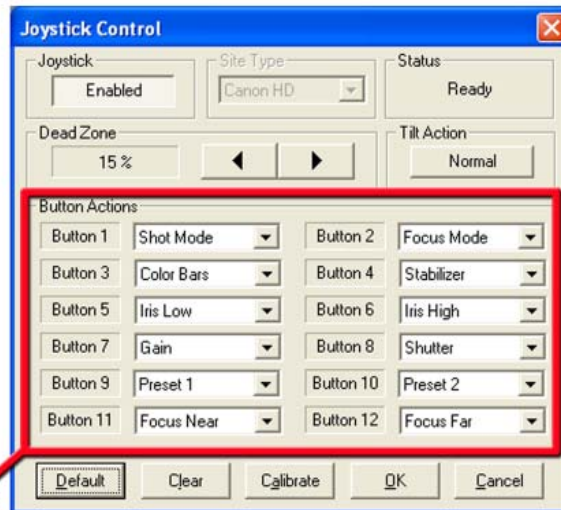
A highly versatile Administrator module is included, enabling the user to custom tailor the MC5 to meet the operational requirements of each application.



Canon BU-45H or BU-46H For Outdoor Applications



Canon BU-50H or BU-51H For Indoor Applications



## Joystick Control

A desktop joystick is available for proportional trim control of the pan, tilt, zoom and focus. The desktop joystick also includes user-defined buttons for the control of other camera functions or the execution of presets.